



PRE-DEPARTURE LOCATION ORIENTATION RECORDING CLICK HERE

Prague, Spring 2024



ORIENTATION OVERVIEW



**GLOBAL
ORIENTATION**
COMPLETE



**LOCATION
ORIENTATION**
YOU'RE HERE!



**CARE TEAM
HANGOUTS**
JANUARY 31st

vertoeducation.org/orientation

MEET YOUR SPEAKERS

We're excited to support you as you prepare for a Verto semester.

We're joined here today by:



JILL CEFALO

PRAGUE
PROGRAM DIRECTOR



ARTURO MOLINO

ACADEMIC SUCCESS COORDINATOR



SUSANNA CIACCIARELLI

STUDENT LIFE COORDINATOR



AGENDA

- Breakout Warm-Up
- Preparation and Arrival Process
- Program-Specific Expectations
- Your Academic Experience
- Living Life In Prague
 - Housing
 - Staff
 - Academic Facility
 - Packing & Budgeting
 - City Transportation, Food & Spots
- Next Steps & Questions

MINI-BREAK

Share Out in Chat

What are you most
excited about?

What questions do you
have?

*Also mention your name,
pronouns, and where you are
from!*



Vítejte v Praze!

We're excited for you to study abroad in the beautiful city of Prague:

- As the **capital city** of the **Czech Republic**, **Prague** is located in the Central Bohemia region of the country and is divided into 22 different districts.
- Prague is known for its diverse architecture and museums, along with its abundant nightlife.
- Prague's city center is a UNESCO World Heritage site



PREPARING TO GO



Pre-Departure Documents

These can be found in on the Student Portal Documents section:

- Pre-Departure Resources, including:
 - Packing List
 - Using Your Phone in Prague
 - Mail and Package Guidelines
 - Visiting Your Student in Prague
 - Code of Responsibility
- Arrival Guide
- Money Abroad
- Verto Housing Overview
- Verto Discovery Week Overview (General)

Prague Fall 2023

Home About Members Events Officers Documents Photos News Forum More ▾

Channels

General Channel

Members

Upcoming Events

Virtual Pre-Departure Orientation
Orientation
Care Team Circle
Prague
Wed August 23 2023
9am PT | 12pm ET
(Required) Care Team Circle,
Prague
Wed, Aug 23, 2023 At 12 PM
Online Event
Prague Fall 2023

Documents (5)

Pre-arrival Documents (1)

Packing Tips: Advice from Alumni

- Do research on the local weather (sweaters, jacket, scarves, a WARM coat)
- Bath towel (if it fits, if not, we can help you get one!)
- Trekking shoes (running shoes or sneakers)
- Travel sized toiletries
- Medicines & contact lens solution
- Neutral and interchangeable clothing & comfortable shoes
- Raincoat/Umbrella (or plan to buy one there)
- Multiple forms of payment – including at least 100 USD equivalent in cash to start



Packing Tips - Carry on:

- All documents for customs (we'll go over that in a moment)
- All electronics & outlet adapters
- All prescription medicine and doctor's notes
- Toothbrush & daily toiletries (travel size)
- A change of clothes (for 2 days) in case your luggage gets lost



Packing Tips: What To Avoid

WE RECOMMEND YOU DO NOT BRING:

- Items that will not work with the voltage difference:

Hair dryers, flat irons, or curling irons (we suggest you purchase these when you arrive in country)

Video game consoles

Heavy sports equipment

- Prized possessions: heirloom jewelry, irreplaceable tokens, etc. It's not worth the risk of losing an item.
- Too many clothes - chances are you'll want to acquire some new stuff!
- Anything you can't carry
- Locked cell phones



Documents for Customs

REMEMBER TO CARRY:

- Your Passport!
- Proof of Return Flight
- Photocopies of your PASSPORT and printout of your CISI (medical insurance) card.

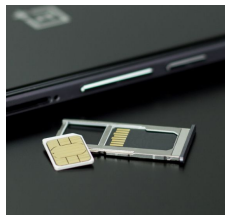
Note: Be sure that your passport is stamped upon arrival in the EU (your first entry point)



Staying in Contact While Abroad

CELL PHONE PLAN:

- Students **MUST** have a cell phone number where they can be contacted while studying in Prague.
- Having a working cell phone is a requirement for program participation
- **You've got Options:**
 - International Plan (You get this from your US provider)
 - Getting a Czech SIM Card (You will have a chance to do this with site staff during orientation week onsite)
 - **Unlock your phone prior to travel**
- Expect to pay approximately \$35 USD (750kč)



Money Matters

- **Inform Your Bank That You'll Be Abroad**
 - If you don't they may block your card for suspicious activity
- **Consider downloading the Revolut app!**
- **ATMs Abroad**
 - Find out whether your bank has a 'sister' bank in Europe that will give you good withdrawal fees (e.g. Bank of America has a sister bank called BNL)
 - Avoid **EuroNet** ATMs
 - Know how much you'll be charged
 - Exchange rate: 1 USD to 24.16 CZK
- Avoid bringing U.S. dollars in cash, you can get CZK directly when withdrawing from a local ATM
- Cards are accepted nearly everywhere
- Prague is also very contactless friendly so add your cards to your Apple Wallet or equivalent!



Have a Plan: Budgeting Guidelines

DEVELOP A PERSONAL BUDGET:

- Expenses are dependent upon your lifestyle! On average, a student will spend about \$75 per week on basic things while in Prague. Some will spend less and others will spend more. To create your budget, think about:
 - How many meals do you plan on eating out?
 - How important are clothes, souvenirs, or physical items to you?
 - Do you plan to take any weekend trips outside of planned activities? (transportation, food, activities, accommodations)
 - Snacks, toiletries, and discretionary
 - The basics: laundry, cell phone plan, medicine
- Students in Prague usually spend between \$75 - \$200 per week, depending on their personal habits
- Avoid “loaning” money to your peers. It may seem like a nice, helpful gesture but it’s best to reach out to your Verto staff first if you are having any issues



ARRIVAL PROCESS



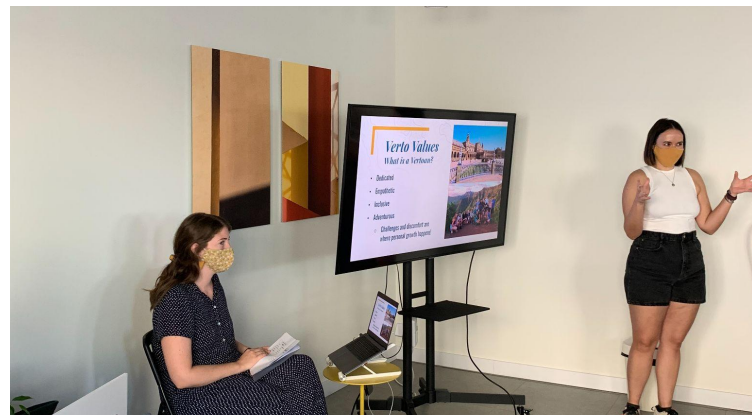
Arrival and Discovery Days

WHAT TO DO WHEN YOU ARRIVE:

- Pickup at Prague Airport and transportation to housing is provided on Monday February 5th
- Plan to arrive between 9AM - 8PM
- Get your luggage, exit baggage claim, and look for the Verto staff there (t-shirts and signs!) More info in your Student Portal
- Shuttle will leave every couple hours and take you to your new home

IN-PERSON DISCOVERY DAYS:

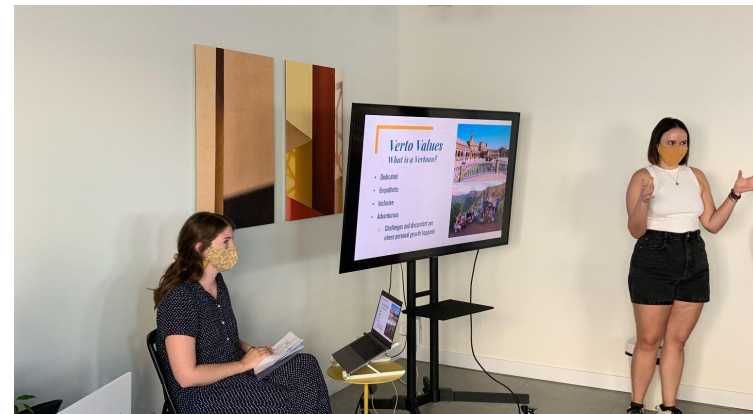
- Get ready for an exciting and informative week!
- Orientation starts the day after arrival and your attendance is required
- We'll cover everything you need to know to get the best start to the program



Verto Discovery “Week”

February 5th - February 11th

- Close knit sessions with your cohort
- Expect to be engaged all day from 9AM (but we'll have breaks too)
- Informative sessions, chances to meet staff, professors, and fellow students
- Activities in the city and an excursion nearby!
- Lunches and free time, too



What if ...

MY FLIGHT IS DELAYED?

- Because you will have submitted your flight information via the student portal, our staff can track your flight
- Email prague@vertoeducation.org
- If you arrive after 8pm, Verto staff can help you organize transit to your destination

I ARRIVE OUTSIDE THE ARRIVAL WINDOW?

- You will have the address of your accommodations, so you'll be able to take an Uber/Bolt to your accommodation on check-in day February 5th
- Check your Student Portal, Pre-Departure Resources folder for **Arrival Guide**



PROGRAM- SPECIFIC EXPECTATIONS



Community Values

FOLLOW YOUR CODE OF RESPONSIBILITY:

- Community values, Care teams and Verto discovery

TIPS FOR LIFE IN PRAGUE

- Life in Prague: a magical and historical city!

Safety:

- Don't make yourself a target by walking with airpods, flashing your phones, or carrying your wallet in your back pocket
- Walk with friends after dark
- Let others know where you're going
- Use the independent travel form when traveling outside of Prague
- Don't accept drinks from strangers
- Carry a bag with a zipper and keep it in front of your body



Alcohol Safety

FOLLOWING YOUR CODE OF RESPONSIBILITY:

- If you are 18 years of age, you have reached the legal drinking age in the Czech Republic
- If you are 18, you are legally allowed to consume alcohol in the Czech Republic (not possess or consume it in Verto facilities)
- Expect periodic and random checks at the residence hall
- You are NOT permitted to use alcohol in an irresponsible way or to abuse alcohol
- Being a “drunken American” wandering the streets puts you and your peers at risk and makes you a target
- Code of responsibility violations can lead to serious consequences up to dismissal



ACADEMIC EXPECTATIONS



ACADEMIC FACILITY:

- Our Study Center at the University of New York in Prague, located within the heart of Prague, **15 min by metro** from the dorm
- **UNYP**, is counting **over 800 students** from over 80 different countries
- The facility includes classrooms, study space, **library**, indoor/outdoor common areas to hang out and study, a cafe, air conditioning, a rooftop terrace, and WIFI.
- Our own study center is located **one street away from the main campus**



Things to keep in mind:

- Verto will cover the cost of textbooks needed for courses.
- Each course includes experiential learning activities that may take place on Fridays, Saturdays, and Sundays

ACADEMIC FACILITY:

In the Classroom you can expect to...

- Participate to active learning
- Engage in discussions with your professor and peers
- Collaborate on group projects and assignments
- Take ownership of your learning
- Gain a different perspective by learning from a diverse group of people



Things to keep in mind:

- Verto will cover the cost of textbooks needed for courses.
- Each course includes experiential learning activities that may take place on Fridays, Saturdays, and Sundays

ACADEMIC EXPERIENCE: COURSE RELATED ACTIVITIES



The National Museum



Lennon Wall



The Senate of the Czech republic



Prague Castle

ACADEMIC EXPERIENCE:

Extra activities


- Study halls
- Tutoring
- Study skills Workshops

LIVING IN PRAGUE



Student I.D

- Needed for following:
 - Metro Pass
 - UNYP I.D (gym & other services)
- Upload by Monday January 29th
 - Form on Campus Groups

**Site Specific Checklist Items** Manage Filter Tasks Show All ▼

0%

The items below are specifically for your location program for this upcoming semester.

^

Site Specific Checklist Items Manage Filter Tasks Show All ▼

0%

☐ **Upload a Passport Style Photo: Due Date June 15th**

Our teams on site will use this picture to help find you at the airport on arrival day!

This photo may also be used for a student ID after you arrive onsite for your program.

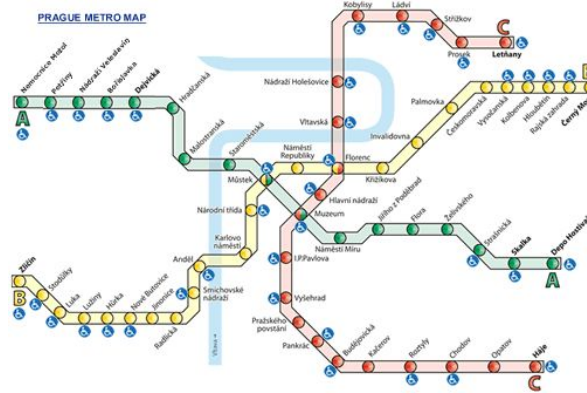
Tips for a good photo:

- Submit one color photo, taken in last 6 months.
- Use a clear image of your face. Do not use filters commonly used on social media.
- Have someone else take your photo. No selfies.
- Take off your eyeglasses for your photo.
- Use a white or off-white background without shadows, texture, or lines.

IMPORTANT: Please rename your photo with the following formatting: LAST NAME, FIRST NAME. Example: TRAVERS, MATTEO

TRANSPORTATION

- The best way to get around Prague is by Foot and tram
- There are also buses and 3 metro lines connecting you to various parts of the city
- Download Google Maps or Mapy.cz when you arrive on site
- You will receive a semester long metro pass as part of your program. You will receive this during onsite orientation. If you lose it, you are responsible for obtaining a new one
- Should you get stopped by the control officers without your pass, you will receive a fine



TYPICAL FOOD

- Czech food is very good, but very heavy. Perfect for the long winter!
- Famous dishes include guláš, česnekova polevka (garlic soup), řízek (schnitzel), knedlíky (bread or potato dumplings), svíčková (meat in a carrot cream sauce), smažený sýr (fried cheese) trdelník (hot rolled spit cake coated in cinnamon and sugar) and so much more!
- For Vegetarians/Vegans: CZECH out [Střecha](#) in Old Town
- Prague is also known for its Vietnamese food and offers authentic cuisine from all over the world



CITY SPOTS

- **Beautiful architecture with rich history:**

- Astronomical Clock
- Prague Castle
- Charles Bridge
- National Museum
- CAMP (architecture and city planning center)

- **Some of the most beautiful natural parks and nature reserves in the world:**

- Riegrovy Sady
- Stromovka Park
- Letna Park
- Grebovka

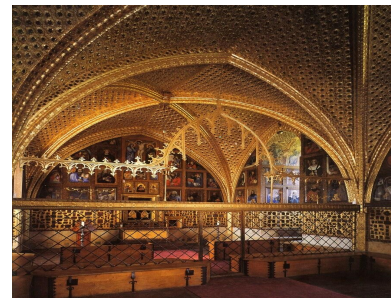


PROGRAM EXCURSIONS

These exciting excursions are part of your program. Meals are included!

Day Trip to Karlštejn Castle

As part of your orientation week, we will take a day trip to the famous summer residence of Charles IV, Karlštejn Castle. It has a beautiful facade and inside you can see the Chapel of the Holy Cross where the King's jewels were housed.



Overnight trip to Cesky Raj

Known also as Bohemian Paradise or Bohemian Switzerland, this area was declared as the first nature reserve in the country in 1955. Here you can find soaring rock pillars, forests, rivers, and hiking and cycling trails. We will spend one night at a local "penzion" and spend the day enjoying outdoor activities like hiking and a ropes course!



CULTURAL ADAPTATION

- **Things to keep in mind when interacting with locals:**
 - Be respectful!
 - Things are just different, not wrong.
 - Quickly learn the basic words.
 - Also learn the taboos or “no-no’s” in conversation.
 - Don’t expect them to speak English – but don’t be surprised if they do.
- **Things to keep in mind about your behavior:**
 - Be accountable for your actions.
 - Use a lot of common sense.
 - You are not exempt from the law in other countries.
 - Your behaviour affects you and those around you.
 - Be willing, flexible and open to new adventures.



OPTIONAL PROGRAM ACTIVITIES

Want to do more? Your Site Coordinators will also organize lots of other activities for you to join!



Going to the theatre to watch a ballet



Travel Journal Workshops



Czech National Ice Hockey game

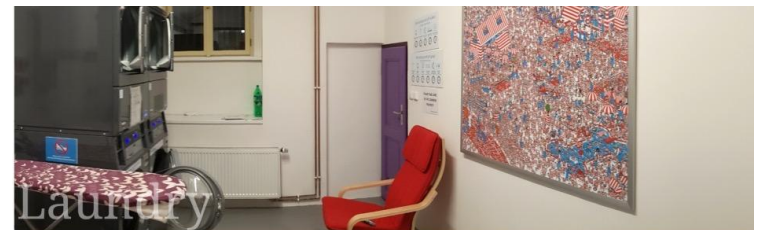
KARLÍN RESIDENCES



PRAGUE RESIDENTIA

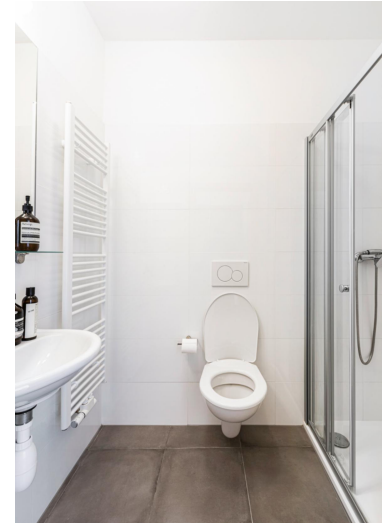
SHARED ROOM (DORMITORY STYLE)

- Shared furnished rooms with 2 Verto students
- Single rooms with shared bathrooms
- 2 students per room
- twin beds (linens provided, NO towels)
- 1 wardrobe, desk, lamp per student
- Handicap accessible
- Shared common areas within the residence:
 - kitchen and living space (couches, tv)
 - Shared bathrooms on each floor
 - Fully fitted common kitchen in basement
 - Each floor has communal kitchenette (sink, stove top burner, mini fridge)
 - Coin operated communal washing machines and dryers, drying racks also available
- Located 5 minute walk to UNYP



KARLÍN RESIDENCES

- Shared furnished rooms with 2 Verto students
- Single rooms
- twin beds (linens provided, NO towels)
- 1 wardrobe, desk+chair, lamp per student
- Shared kitchen per floor (large fridge, stove top, kettle, microwave, toaster)
- Shared bathrooms in each unit
- Communal washing machines
- Located 2 minute walk to the metro, and a 10 minute ride to UNYP!



CARE TEAM

- **Who is in your Care Team?**
 - Your Academic Success/Student Life Coordinator
 - Your cohort of 22 students!
 - When will you meet with your Care Team?
 - You will receive an email from your Coordinator very soon
- **In the Care Team Circle, you'll meet them, your fellow students, and get a jumpstart on your semester together**



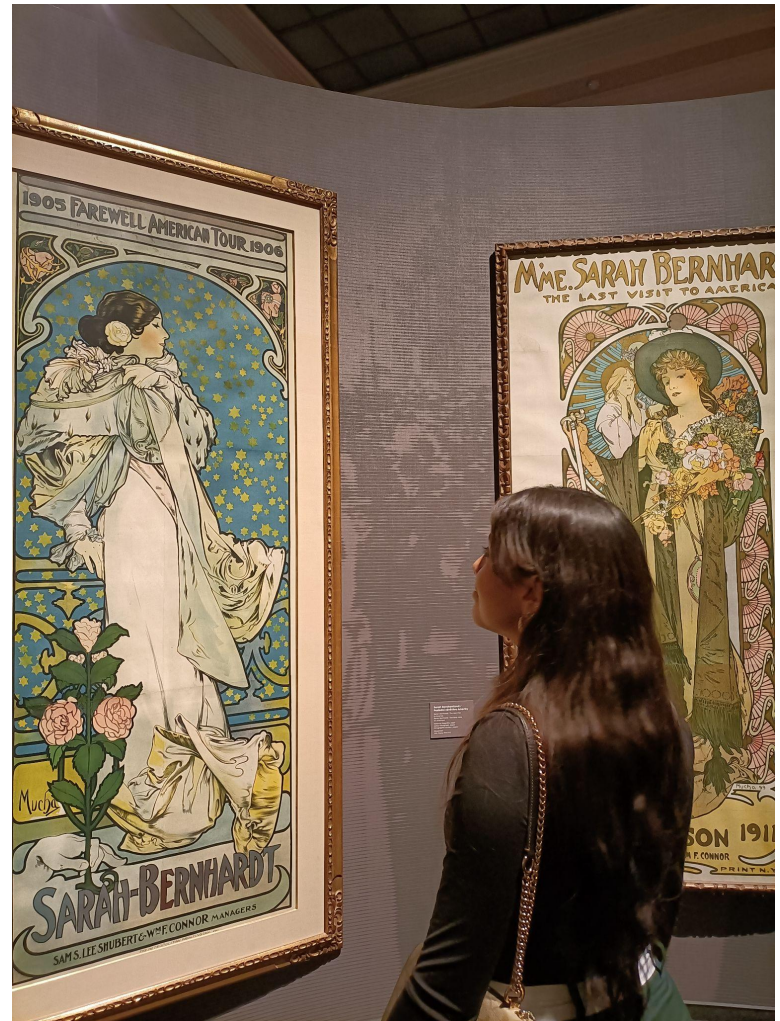
Verto Discovery

- **Verto's Values in Action**
 - Compassion
 - Responsibility
 - Transformation
 - Vulnerability
- **Experiential learning activities**
- **Taking control of your semester**



Verto Transformation

- Our goal at Verto is to create a more connected, empathetic world of engaged global citizens.
- We hope you walk away from your semester in Prague, with much more than incredible memories and transferable credits; we will help you build confidence, self-awareness and clarity to thrive in college and in life.
- We want to spark your natural curiosity and desire to engage in the world around you!



NEXT STEPS & QUESTIONS



IMPORTANT

90 Days in Schengen area

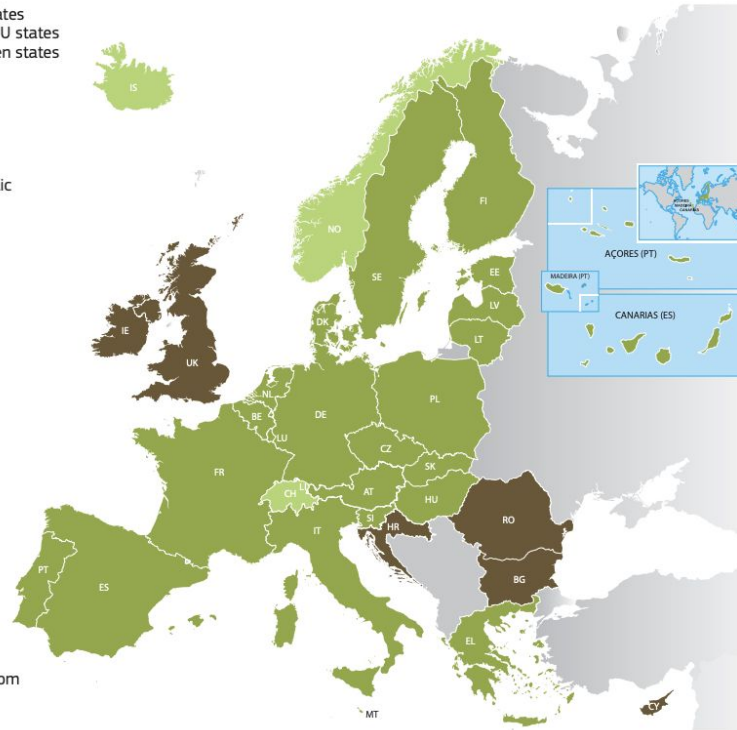
- You have a 90-Day limit to remain in the Schengen area within an 180-day period. There is no way to “reset” this limit; leaving to a non-Schengen state does not reset the limit.
- Spending a weekend in a non-Schengen state does NOT count towards 90 days
- Your academic calendar is exactly 90 days
- In general, do not plan to arrive early or stay late

Questions or concerns? Email your SOA today at kaylee.koenig@vertoeducation.org

The Schengen area

- EU Schengen states
- Non-Schengen EU states
- Non-EU Schengen states

AT Austria
BE Belgium
BG Bulgaria
CH Switzerland
CY Cyprus
CZ Czech Republic
DE Germany
DK Denmark
EE Estonia
EL Greece
ES Spain
FI Finland
FR France
HR Croatia
HU Hungary
IE Ireland
IS Iceland
IT Italy
LI Liechtenstein
LT Lithuania
LU Luxembourg
LV Latvia
MT Malta
NL Netherlands
NO Norway
PT Portugal
RO Romania
SE Sweden
SI Slovenia
SK Slovakia
UK United Kingdom



PRE-DEPARTURE DOCUMENTS

These can be found on the Enrolled Participants Page:

- Pre-Departure Resources, including:
 - Packing List
 - Using Your Phone in Prague
 - Mail and Package Guidelines
 - Verto Florence Study Center
 - Visiting Your Student in Prague
 - Code of Responsibility
- **Arrival Guide** will be sent via email

LOCATION RESOURCES

Please read the below resources to help prepare you for a transformative abroad experience with Verto Education.

[General](#) | [London](#) | [Seville](#) | [Florence](#) | [Buenos Aires](#) | [Prague](#)

General

General Resources

- [Code of Responsibility](#)
- [COVID, Health & Safety – General](#)
- [Health, Safety, and Emergency Procedures](#)
- [Tips for First Time Travelers](#)
- [Fall 2023 Academic Calendar – All Locations](#)
- Spring 2024 Academic Calendar (click below)
 - [Buenos Aires & Florence](#)
 - [London & Prague](#)
 - [Seville](#)
- [Independent Travel Addendum](#)
- [Location Arrival Windows](#)

MARK YOUR ATTENDANCE

IMPORTANT: Report Your Attendance
before the end of the Session



(Required) Care Team Circle Date

January 31st at vertoeducation.org/orientation

Location Resources

- In Enrolled Participants Page

To access, visit
bit.ly/vertoattendancesp24