

ROC PLAYERS

ALUMNI NEWSLETTER

SPRING 2023 | ROC Players Alumni Newsletter



Inside This Issue

Welcome

Welcome Alumni

Director's Spotlight

Interview with our director

Our Spring Production

More about this semester's show

Member Spotlight

An interview with a member

Urinetown

Last semester's production

Hello Alumni!

ROC Players has had a busy semester and we are excited to share with you all we have been working on. Aside from rehearsing our show we have been having weekly General Member Meetings, meeting together to study at the library, social gatherings and truly getting closer as friends.

This semester ROC Players is going back to our roots while putting on *The 25th Annual Putnam County Spelling Bee*, which some of you alumni may have been involved in when we produced it seven years ago as our first performance. Since 2016, our club has changed so much. Not only have we grown with the numbers of students but since we received a generous donation, it has allowed us to span out and push our limits as a club. Read below to learn more about this semester's production, interviews with our members and our accomplishments from last semester.





Director Spotlight

Below you will find an interview with our current director, Meghan Consorti!

Tell us about yourself

"I'm Meghan Consorti, I'm from just outside of Boston, Massachusetts. I am a double major in English: Creative Writing and Film & Media Studies with a minor in Psychology."

Why did you choose to direct this show?

"I chose to direct this show because it has been my favorite show since I was in middle school. I think that it's so unique. It relies heavily on improvisation, which is one of my favorite things in musicals. This is also the first show that ROC Players ever put on, and I think that it would be such a great opportunity for alumni connection!"

What are you most excited about?

"The audience participation! *Spelling Bee* requires that audience volunteers come on stage to spell words, and they even get involved in the choreography and blocking when they least expect it. I am really grateful for the amazing cast and team that I'm going through this process with. ROC Players is such a supportive group and I'm glad to get to work on this show with my favorite people."

Share with us some fun facts!

"Outside of theater, I'm working on an independent study making a short film right now. I love movies and my favorite is *The Skeleton Twins*, and my favorite TV show is *Community*."



A photo of some of our executive board for the 2022-2023 school year

Executive Board

ROC Players' executive board is a group of students who dedicate their time to help keep this club running. Through weekly meetings and work on their own, each member plays a role in keeping this club afloat.

We want to encourage you to feel free to reach out to any member, listed at the end of this newsletter, for more information about our show or how to stay connected with ROC Players. This April we will be voting in a whole new executive board, to keep up to date make sure to follow our socials listed on the last page.



Our Spring 2023 Show

The 25th Annual Putnam County Spelling Bee is a show that is best described as having fun. It follows a group of six children as they battle it out in a spelling bee to see who will win and make the national competition. It relies on improvisation from the cast, but the fun part is that it includes audience volunteers! It not only is funny, but it is emotional and heartwarming, and a show that really draws you into these strong characters' lives.

We are so excited to share this show with you all on March 30th, March 31st, and April 1st. For tickets please keep an eye on keep an eye on our Instagram ([@urROCplayers](https://www.instagram.com/urROCplayers)) and our Facebook page ([@univROCplayers](https://www.facebook.com/univROCplayers))!

“

The friendships I make while working on a show is one of my favorite parts of theater.

– Mikaila Son '26

”

Donations

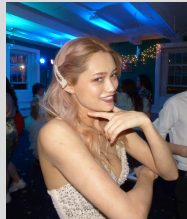
We love theater and want to continue this club for years to come.

We are also always looking for your support! You

can donate to the club directly using this

link: <https://securelb.imodules.com/s/1676/giving19/giving19.aspx?sid=1676&gid=2&pgid=712&cid=1541&appealcode=23C4N>

Once you fill out your personal information and payment all normally make sure to indicate our club as the place you want the money to be donated. To do this, 1) Click the box that says "Select Gift Designation." 2) Then scroll down to where it says "Other - Write-in" click continue and write in the next field. 3) Then in the box that says please indicate the area of support, write "ROC Players." The donation will then be sent to our club.



Member Spotlight

Meet Mikaila Son '26 (She/Her), a new member from the cast

Tell us a bit about yourself.

"My name is Mikaila Son, I'm a first year student from River Edge, NJ and I'm double majoring in psychology and business down the marketing track."

Why did you pick to join ROC Players?

"I've done theater for about seven years now and the vast majority of my experience lies in musicals. I love to sing and dance so musical theater is my favorite to perform! I had a great run with it in high school and it was something I was not willing to let go in college, so I sought out ROC Players to continue pursuing my interests."

Tell me about the part in the show

"I portray the role of Olive Ostrovsky. She's quiet and unconfident, but she really wants to make friends with the other spellers there and is very sweet to everyone she meets. Throughout the bee, she forms a friendship with fellow speller William Barfee and learns a lesson or two about loss, giving her a new found hope to take on her life back home."

What has been your favorite part so far?

"I love the connections I have been making with everybody! The friendships I make while working on a show is one of my favorite parts of theater. *Spelling Bee* is one of my favorite shows, and I'm so thankful to have the opportunity to work with such talented and dedicated members. Everyone has been so welcoming and the club is starting to feel like a second home. I find myself looking forward to strenuous rehearsal sessions and tech week because I know I'll have so much fun with everyone there."

Fun fact about yourself?

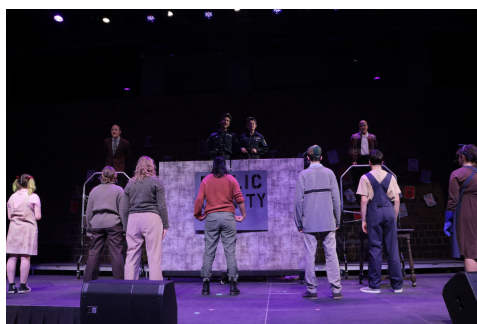
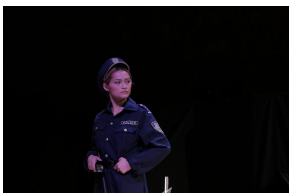
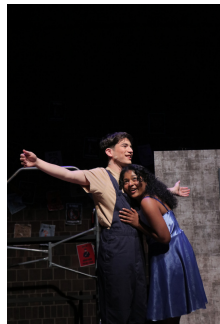
"I play six instruments and I did this show in high school and played the role of Marcy."

Is there anything about ROC Players that you are looking forward to in the future?

"I'd love to direct a show or work in production! I've always been on the performing side of theater, never on the technical or directing aspect. That's definitely something I want to try out, so I'm hoping I get the opportunity to do so in the future!"

Theater Formal

At the end of the Fall semester ROC Players joined other student theater groups, Off Broadway On Campus and The Opposite Of People, to create a theater formal. Hosted at Drama House, we all got dressed up and had a night of dancing, singing, and getting to know each other. We had so much fun and hope to keep this as an annual tradition.



Urinetown

Our Fall 2022 production

Last semester, ROC Players put on Urinetown. Attached are all photos from our show nights and tech week. It was an amazing show and turnout and we are so grateful for all of you who came out to see us perform. Thank you for all your support and we hope to see you this semester as well!

Executive Board

Rey Hankinson '24

Artistic Director

Ahankins@u.rochester.edu

Dominique Neveu '24

Business Manager

Dneveu@u.rochester.edu

Hannah Van Scoy '25

Production Manager - Spring

Hvanscoy@u.rochester.edu

Katie Ho '24

Public Relations Chair

Kho7@u.rochester.edu

Lucy Michaud Calle '23

Advancement Chair

Lmichau6@u.rochester.edu

Meghan Consorti '25

Secretary

Mconsort@u.rochester.edu

Marina Zapesochny '25

Secretary

Mzapesoc@u.rochester.edu

Rhea Bharadwaj '25

ADE Chair

Rbharad2@u.rochester.edu

Advisor

Jill Wulfenstein

J.wulfenstein@rochester.edu

Stay Connected

Website ([CCC](#))

Email (urrocplayers@gmail.com)

Facebook ([@univROCplayers](#))

Instagram ([@urROCplayers](#))